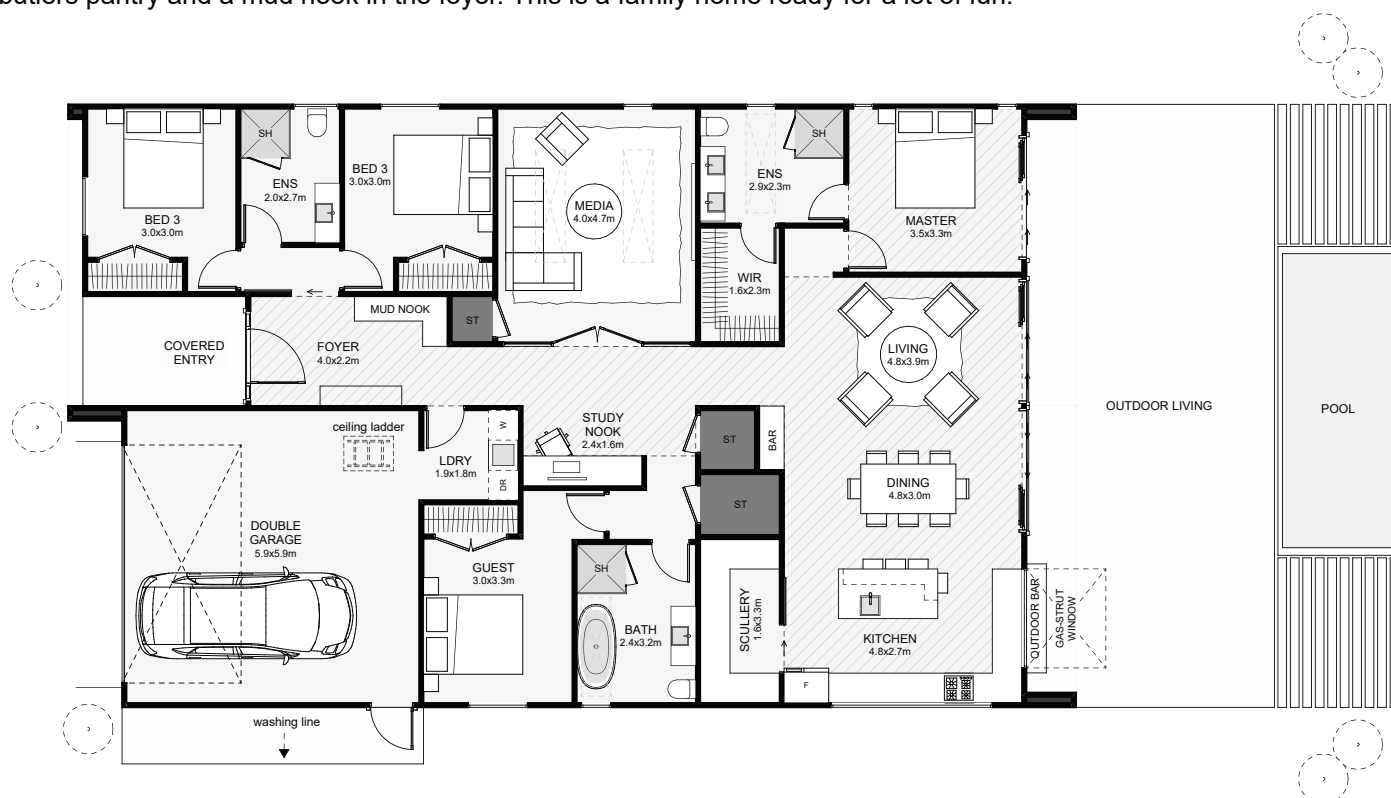


## Waimana | Stream Of Influence



This modern home includes more than first meets the eye. Under one gable roof, four bedrooms are all positioned for multi-use; one as a guest room, the primary bedroom private with patio access, and two bedrooms with a jack and jill style bathroom. This home also includes a study nook, a media room with full-height glazed doors, lots of storage, a butlers pantry and a mud nook in the foyer. This is a family home ready for a lot of fun!



Floor Area: 220m<sup>2</sup>

Min Section Size Needed: 550m<sup>2</sup>

 2 
  4+ 
  3 
  2 
  20.3m 
  12.2m

Contact Us:

**Ann:** 021 030 4291 | **Carl:** 027 222 3922

**E:** ClientEnquiries@Smartway.Builders

**www.Smartway.Builders**

MH3-02