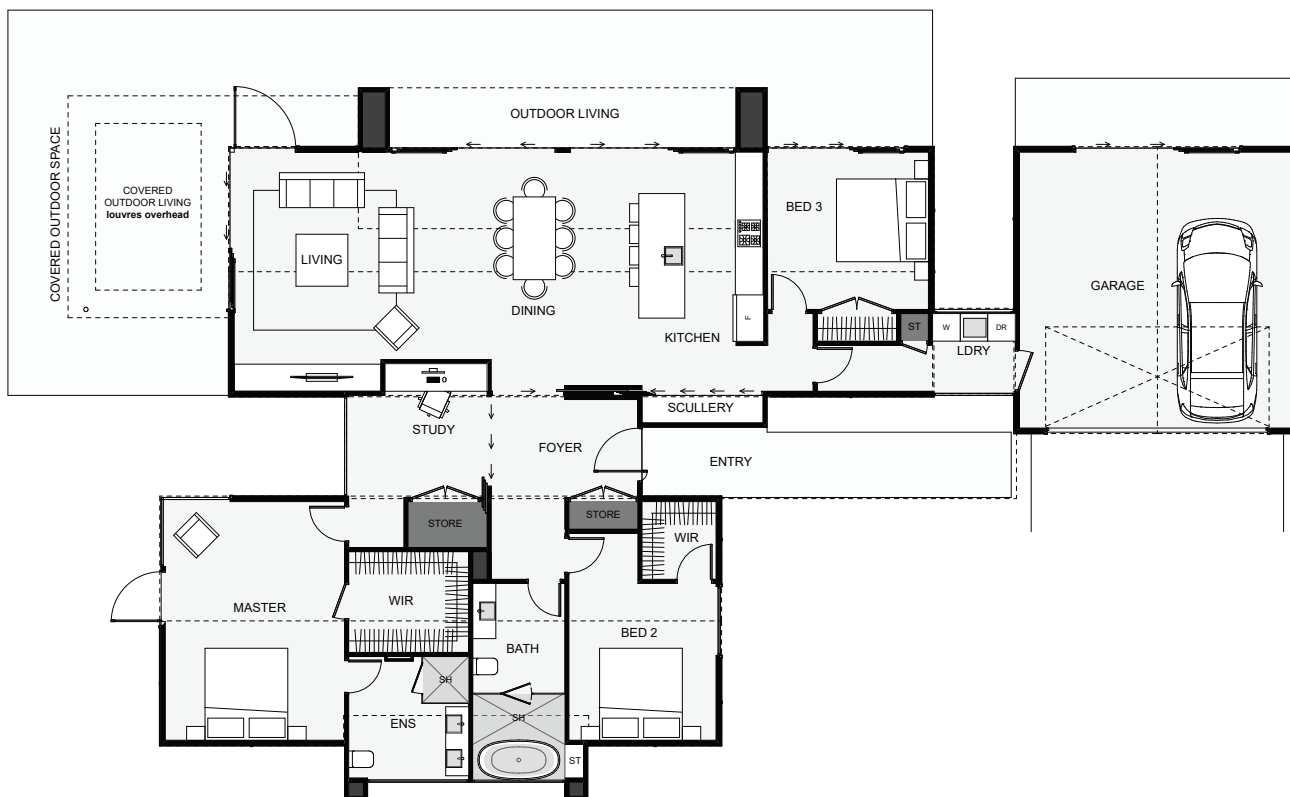


## Manuhiri | Visitor Or Guest



Classic gable ends with louvre detailing and modern concrete extrusions are just the start of this architectural home. Timber weatherboards split by vertical battens gives the classic weatherboard cladding a more sophisticated look. Inside, minimum hallways are used to save on space and rooms are positioned to make use of the natural sunlight path. Some features include the open study with close-off doors, the integrated scullery, the back to back bathrooms and the covered outdoor living space, positioned for midday to evening light. This home makes a great family home that may just stand the test of time.



Floor Area: 212m<sup>2</sup>

Min Section Size Needed: 530m<sup>2</sup>

 2
  3
  2
  1
  24.8m
  15.5m

Contact Us:

Ann: 021 030 4291 | Carl: 027 222 3922

E: ClientEnquiries@Smartway.Builders

[www.Smartway.Builders](http://www.Smartway.Builders)

3BH-04



**SMARTWAY  
BUILDERS**  
 Expertise On Every Level