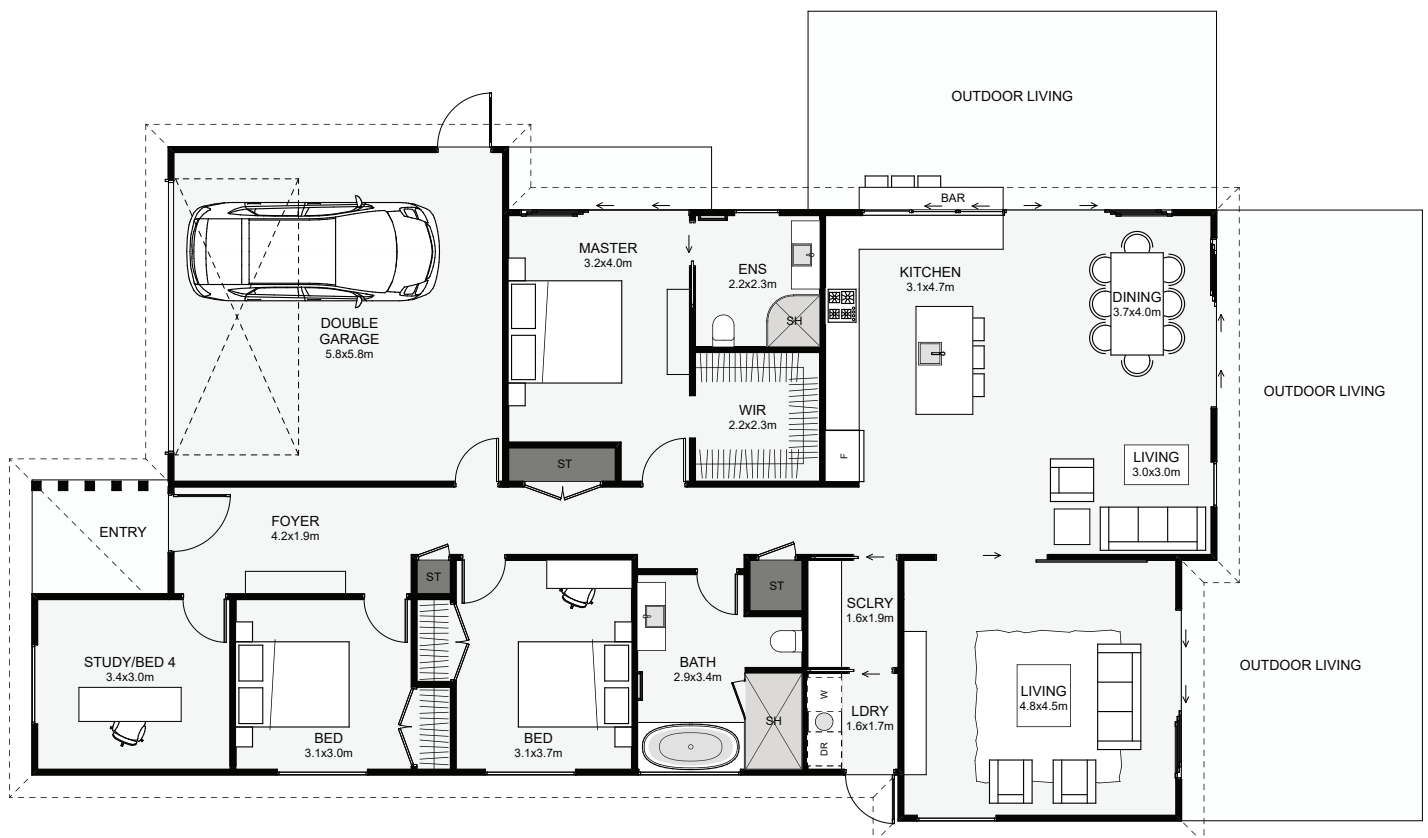


Kauri | NZ Kauri Tree



The main living, dining and kitchen are positioned for a great outlook with the optional outdoor kitchen bar for evenings with family and friends. Some other great features include the dual living, the master's large walk-in wardrobe, one extra wide bedroom which could easily fit a desk and an optional study close to the front door if you plan on working from home!



Floor Area: 199m²

Min Section Size Needed: 500m²

 2
  4
  2
  2
  20.9m
  11.9m

Contact Us:

Ann: 021 030 4291 | **Carl:** 027 222 3922

E: ClientEnquiries@Smartway.Builders

www.Smartway.Builders

SDH-01