

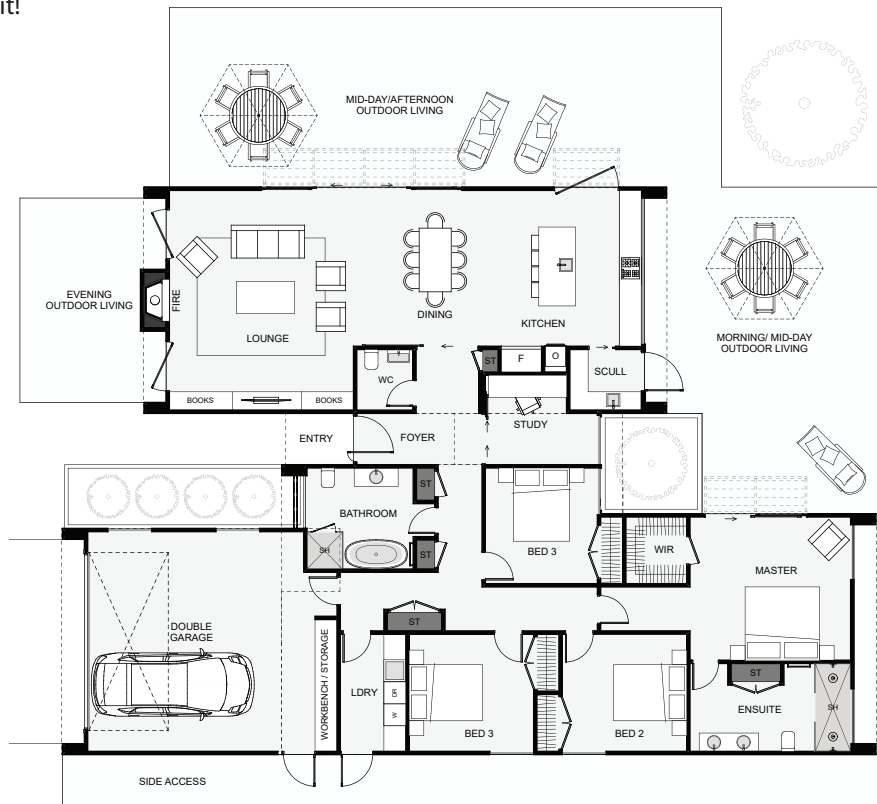


**SMARTWAY
BUILDERS**
Expertise On Every Level

Matariki | Seven Sisters Stars



This modern four bedroom home has three core parts that make up its strong geometric frontage. When entering the foyer, a study slider can be opened so visitors can enjoy a view through full height glazing out to whatever centrepiece you desire. The dining takes in the morning sun from a large sliding window in the kitchen which drops right down to the bench level. Extra features include the scullery, a workbench within the garage and a large ensuite. If you're looking to build a bold home with a ton of features, this is it!



Floor Area: 240m²

Min Section Size Needed: 600m²

🏠 2 | 🛏️ 4+ | 🚿 2.5 | 🛋️ 1 | 📏 22.2m | 📏 15.5m

Contact Us:

Ann: 021 030 4291 | **Carl:** 027 222 3922

E: ClientEnquiries@Smartway.Builders

www.Smartway.Builders

DH1-03



**SMARTWAY
BUILDERS**
Expertise On Every Level